



INNOVATIVE  
**HEAT & SOUND  
CONTROL**  
SOLUTIONS

# INSTALLATION INSTRUCTIONS

## PART #50016 RV DOGHOUSE INSULATION KIT UNIVERSAL HEAT & SOUND INSULATION KIT FOR RV ENGINE DOGHOUSE COVERS

**INSTALLATION QUESTIONS? CONTACT DEI AT 800-264-9472  
OR VIA EMAIL AT TECH@DESIGNENGINEERING.COM**

**NOTE OF CAUTION: Wear eye and hand protection when installing all materials.**

### PARTS CHECKLIST

Six - 12" x 24"  
Boom Mat Damping Material

Three - 24" x 24"  
Ultra Block Insulation

One - 1.5"x 15ft Roll Cool Tape

One - Installation roller

### NOTES

- Test fit all parts before sticking down and installing
- **SURFACE MUST BE CLEAN!**
- Install above 60°F

### SURFACE PREP

Clean surfaces with Windex/glass cleaner/microfiber towels. **ALL SURFACES MUST BE CLEAN AND GREASE/DIRT FREE** for product to adhere properly to panels and surfaces.

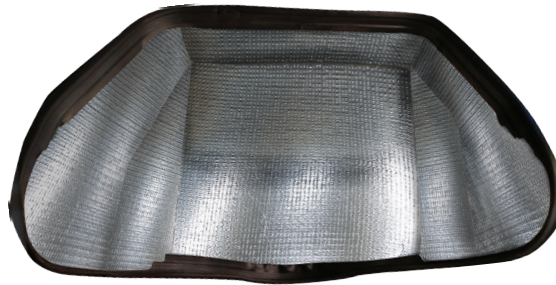
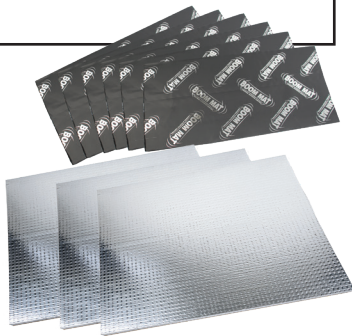
### TOOLS NEEDED

Utility Knife  
Straight Edge

Heavy Duty Scissors  
Sharpie Marker

Flat Blade Screw Driver

Tape Measure

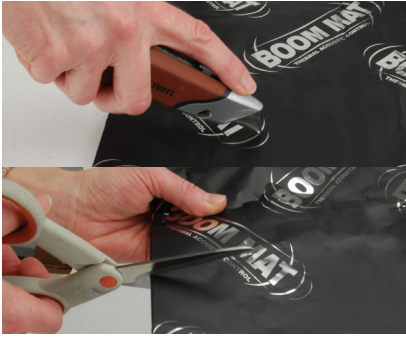


**NOTE: This kit can be used on all style RV Engine Covers. Class A RV is shown in this instruction sheet.**

1. Remove doghouse/engine cover per manufacturers instructions
2. Remove any old, deteriorated insulation that came from the factory on the underside of the doghouse/engine cover
3. Clean bottom of engine cover/doghouse pan thoroughly. For proper long lasting adhesion, you must remove all dirt, grease and oils from the and before adhering the shield.
4. You will be applying the Boom Mat damping material as the first layer. You can simply lay the Boom Mat in place and mark where to cut. You do not need to do 100% coverage with the Boom Mat Material so do not be concerned with getting a perfect fit. Once you have the Boom Mat damping layer down you can then install the DEI insulation. Fig 1, Fig 2, Fig 3, Fig 4

# Placing Boom Mat Damping Material

FIG 1



Trim the Boom Mat Material to desired shape and size with a utility knife or scissors. A template is helpful when trying to achieve a professional look.

FIG 2



Remove the release liner to expose the adhesive.

FIG 3



Carefully apply to clean and dry area.

FIG 4



Once in the proper location, use an installation roller and apply pressure to ensure a strong bond between Boom Mat and the installation surface.



Damping material installed on under side of engine cover

## Placing Insulation Material



FIG 5

5. You can use paper or cardboard to make a pattern for cutting the New DEI insulation or you can lay the new insulation in place and mark where you need to cut. Fig 5





FIG 6

**LEAVE ROOM ALL  
THE WAY AROUND  
THE MATERIAL FOR  
ENGINE COVER DOOR  
TO SEAL PROPERLY**

6. Take into consideration the fitment of the cover around the edges. Be sure to leave enough room for the cover to seal properly once it is closed or installed. Fig 6

7. Test fit all the pieces before removing the release liner and adhering the insulation to the cover. Once it has been adhered, you will not be able to remove it without damaging the insulation.

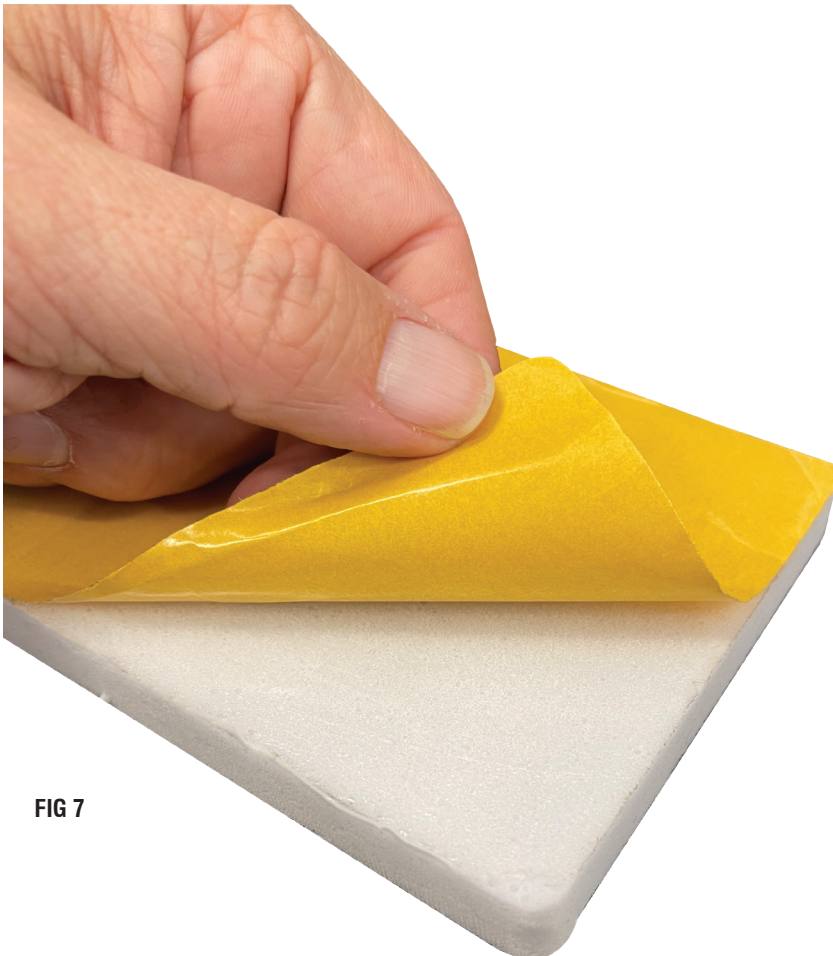


FIG 7

8. Once you are happy with the fit you can adhere the insulation, start by hold the first panel in place, then peel back a small corner of the release liner to expose the adhesive. Fig 7.



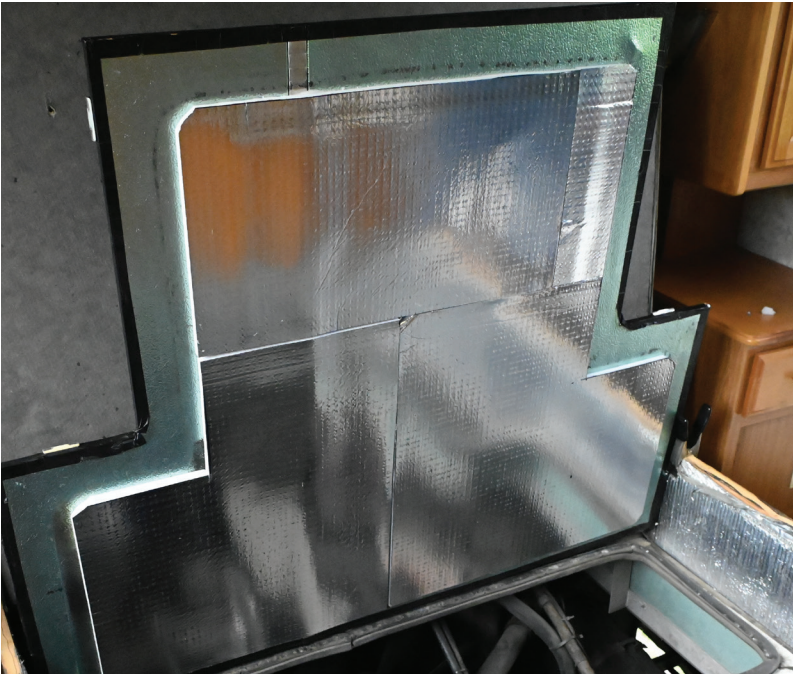


FIG 8

9. Push the panel down to adhere and tack into place. Lift the panel and peel the remainder of the release liner away, pushing and adhering the insulation as you go. Repeat this process for the rest of the panels. Fig 8



FIG 9

8. Using the reflective DEI Cool tape, cover the seems between the panels. Fig 9 & Fig 10

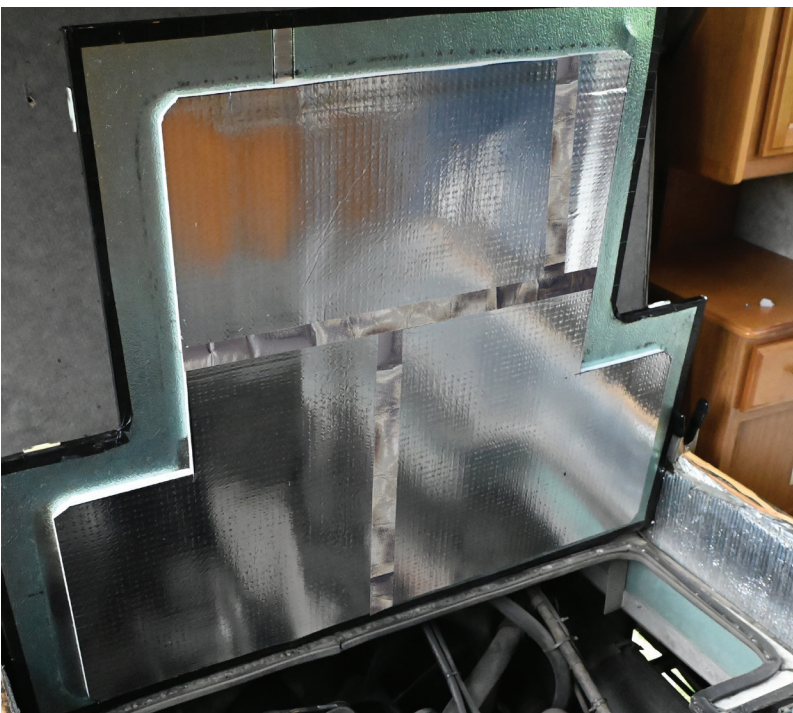


FIG 10