

INSTALLATION INSTRUCTIONS

Thank you for purchasing genuine Design Engineering, Inc. products. Be sure to always wear the proper safety equipment when installing any DEI product. Design Engineering Inc. WILL NOT BE HELD LIABLE FOR IMPROPER INSTALLATION OR USE OF THIS PRODUCT. Please follow all instructions provided. If you are unsure of any installation procedure, please contact a certified technician.

DESCRIPTION: 500410
1967-1969 Camaro/Firebird side panel insulation kit

KIT CONTENTS:
12 pc precut D-Mat insulation
13 pc Boom Mat damping material
2 - 2x24,
3 - 2x12
4 - 2x6
4 - 6x12 x4
1 Can Adhesive spray
• Instructions

TOOLS NEEDED:

Scissors

SAFETY:

Safety glasses
Gloves

NOTE OF CAUTION: Wear eye and hand protection when installing all materials.

OVERVIEW: This kit controls heat and sound on the side panels of 67-69 Camaros and Firebirds



Fig 1

Damping Material

2x12
Inside trunk on
wheel well. Both
driver and
passenger side

STEP 1. Remove interior and make sure all surfaces are clean and free from dirt and grease.

STEP 2. See **Fig 1, Fig 2, Fig 3, Fig 4 & Fig 5** for placement and size of Boom Mat material (Placement marked in red)

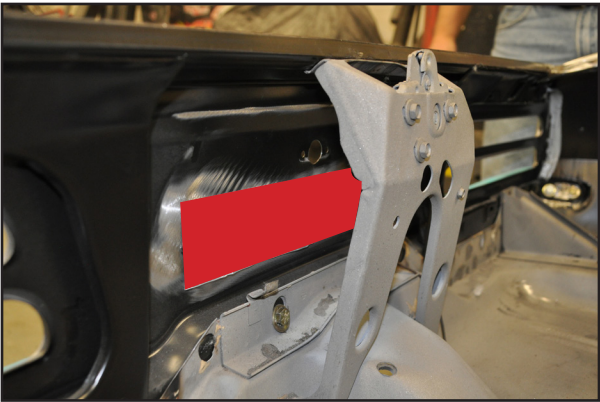


Fig 2

Damping Material

2x24
Inside trunk on
rear quarter panel.
Both driver and
passenger side

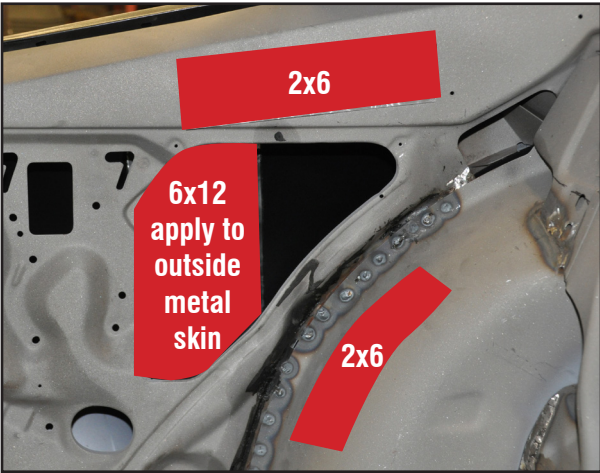
STEP 3. Test fit all Boom Mat in place then peel and stick. Make sure to press firmly in place to ensure a good bond to the metal.



Damping Material

2x12
In trunk between
tail lights

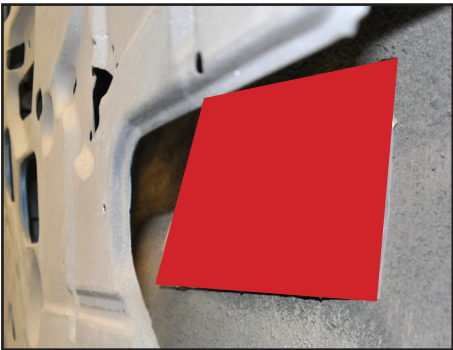
Fig 3



Damping Material

2x6
2x6
6x12
Both driver and
passenger side

Fig 4



Damping Material

6x12
Inside doors Both driver
and passenger side

Fig 5



D-MAT

Inside trunk on
rear quarter
panels and wheel
well. Both driver
and passenegr
sides

Fig 6



STEP 4. See **Fig 6, Fig 7, Fig 8, Fig 9** for placement of D-Mat insulation.

STEP 5. Pre fit each piece to make sure they are in the correct location. Some minor trimming maybe needed as each car can be slightly different.

STEP 6. Once all the pieces are in place remove and use the spray adhesive following the instructions on the can.

STEP 7. Work one piece at a time until all pieces are installed.

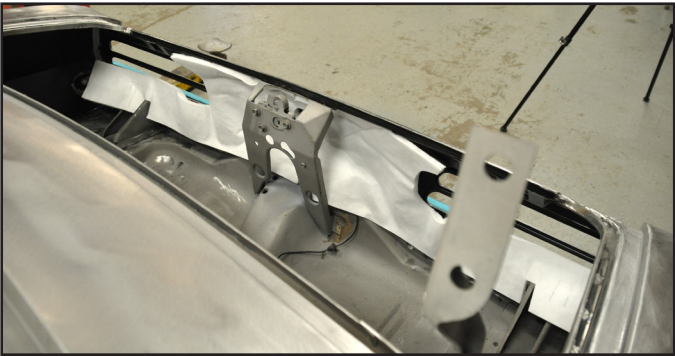


Fig 7

D-MAT

Rear teail light panel. 2 pieces



Fig 8

D-MAT

Rear seat side panels. Both driver and passenger sides

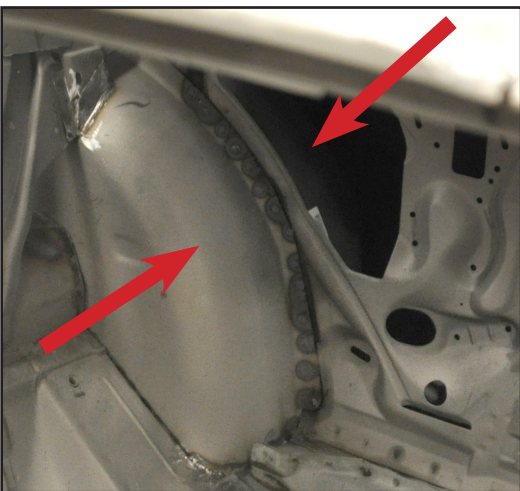
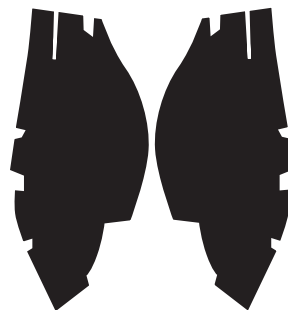


Fig 9

D-MAT

Rear seat wheel well. One piece inside the two metal panels and one outside.



On wheel well between two panels



On wheel well by back seat