

INSTALLATION INSTRUCTIONS

Thank you for purchasing genuine Design Engineering, Inc. products. Be sure to always wear the proper safety equipment when installing any DEI product. Design Engineering Inc. WILL NOT BE HELD LIABLE FOR IMPROPER INSTALLATION OR USE OF THIS PRODUCT. Please follow all instructions provided. If you are unsure of any installation procedure, please contact a certified technician.

DESCRIPTION: 51409 - 67 - 69 General Motors F-Body
Camaro/Firebird Kick Panel Insulation Kit

KIT CONTENTS:

2 pc Pre-Cut D-Mat insulation
10 pc 2" x 4" Boom Mat Damping Material
• Instructions

TOOLS NEEDED:

Scissors

SAFETY:

Safety glasses
Gloves (Boom Mat tape edges may be sharp)

NOTE OF CAUTION: Wear eye and hand protection when installing all materials.

OVERVIEW: 2 step heat and sound control kit to eliminate vibrations, absorb sound and block heat from kick panel areas.

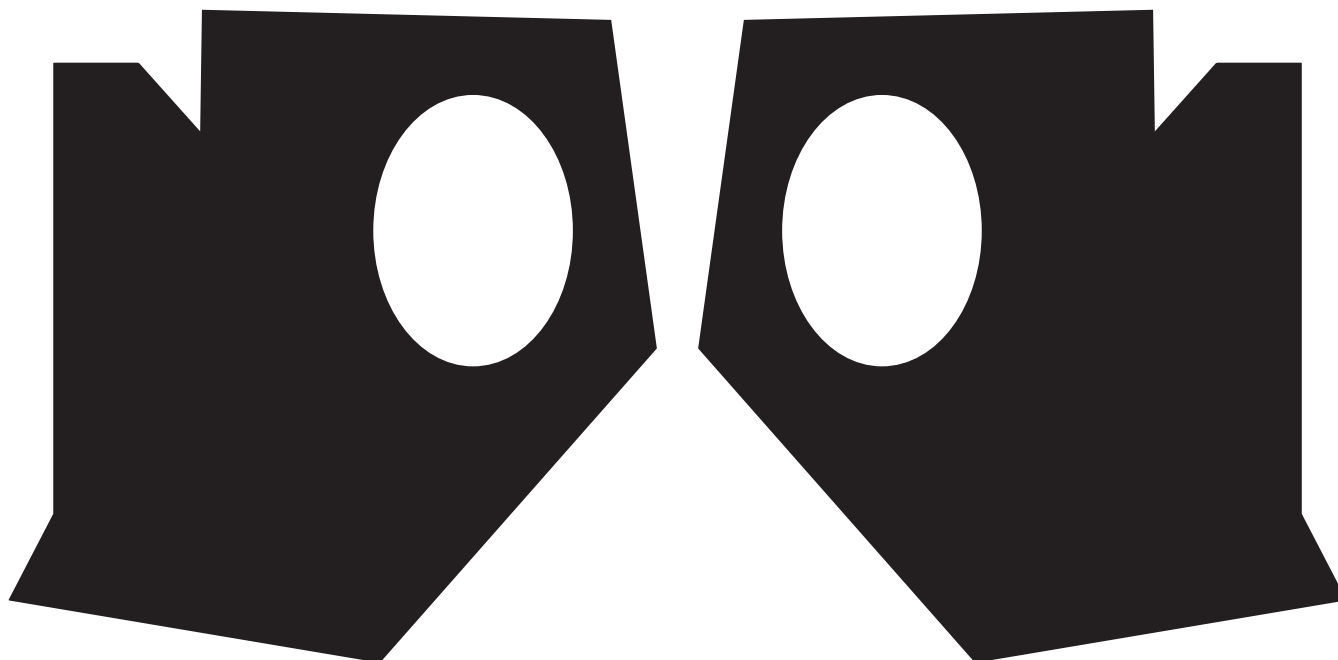


Diagram 1 of D-Mat pre-cut kick panel insulation

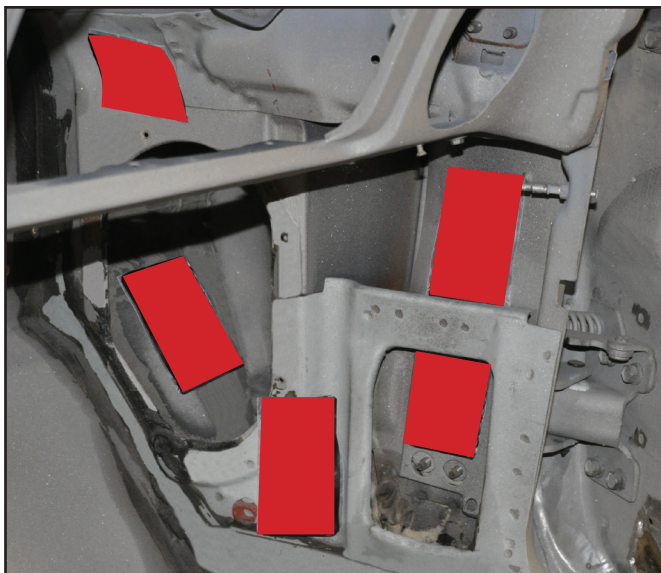


Fig 1



Fig 2



Fig 3

PREPARATION

STEP 1. Remove both drivers and passenger side kick panels.

STEP 2. Clean and vacuum any dirt or debris from area. It needs to be clean and dry to start the installation.

INSTALLATION

STEP 4. Open the contents of your kit. You will see two pre-cut pieces of our D-Mat insulation and a bag containing the Boom Mat damping material.

STEP 5. See **FIG 1** for placement positions for all the Damping Material. Exact location is not critical; this gives you the general location to apply each piece of material.

STEP 6. Peel the release liner from the back of the damping material and position according to **FIG 2**. Firmly press the material to the metal. A good contact is needed for the Damping material to function properly. Any air trapped under the Damping material will affect its performance.

STEP 7. Repeat for each piece.

STEP 8. Once all the Damping material is in place you can begin to install the D-Mat insulation. The D-Mat has a scrim layer on one side. This layer installs facing the interior.

STEP 9. Lay each piece into place to test fit. You may have to slightly trim some material as each car can have some variations in the body. **FIG 3** Once you are satisfied with the fit you can remove the insulation and apply your choice of contact adhesive following the directions from the adhesive. **FIG 3**

STEP 10. Tech Tip. "You only need to apply a light coat of adhesive" to hold everything in place. This will also allow you to easily remove the insulation in the future if needed.

STEP 11. Now you can re-install your kick panels.