

**PRODUCT INSTRUCTIONS**

Thank you for purchasing genuine Design Engineering, Inc. products. Be sure to always wear the proper safety equipment when installing any DEI product. Design Engineering Inc. WILL NOT BE HELD LIABLE FOR IMPROPER INSTALLATION OR USE OF THIS PRODUCT. Please follow all instructions provided. If you are unsure of any installation procedure, please contact a certified Powersports technician.

**DESCRIPTION:** Heat Shield Liner Kit

**PART NUMBER:** 902468

**APPLICATION(s):** Indian Scout/ Scout 60 2015-2016

**KIT CONTENTS:**

Pre-cut heat barrier	QTY 3
Utility roller	QTY 1
#28 Stainless Clamp	QTY 8
#48 Stainless Clamp	QTY 1

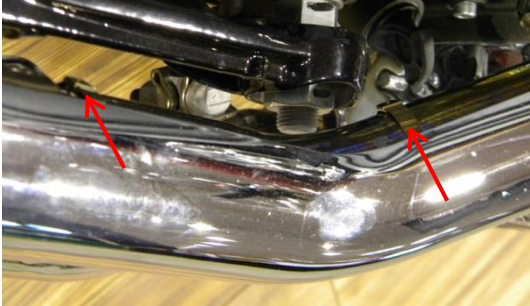
**TOOLS NEEDED:** Scissors, Side Cutters, 5/16" socket & driver.

**OVERVIEW:** The exhaust system on the Indian Scout can reach uncomfortable temperatures during prolonged stops and idling. This is especially true for shorter riders. This kit is designed to add an intermediate insulation layer between the exhaust system and the OEM heat shields. This helps insulate and reduce the heat transfer to the outer heat shield, increasing riding comfort.



**Kit Contents**

1. Make sure the engine is off and the exhaust system is cool before attempting this installation.
2. Carefully using side cutters, clip the retaining bands that hold the OEM Heat Shields. **Fig.1**
3. Remove the OEM heat shields.
4. Place heat shields face down on a clean work surface. **Fig. 2**
5. Using gentle pressure along with the supplied roller, shape the pre-cut liners into the back of the shields. Be sure the aluminum side of the liner is facing the exhaust. Be sure to wear gloves when handling the liners. **Fig. 3, 4**
6. The liners are precision-cut to fit the shields, however, due to manufacturing variances it may be necessary to trim any excess material that is visible.
7. Using the supplied stainless clamps, re-attach the heat shields to the exhaust system. (5/16" socket recommended) **Fig. 5**
8. After the initial ride, double check clamp tension to ensure the shields don't come loose while the vehicle is in use.



**Fig. 1**



Fig. 2



Fig. 3

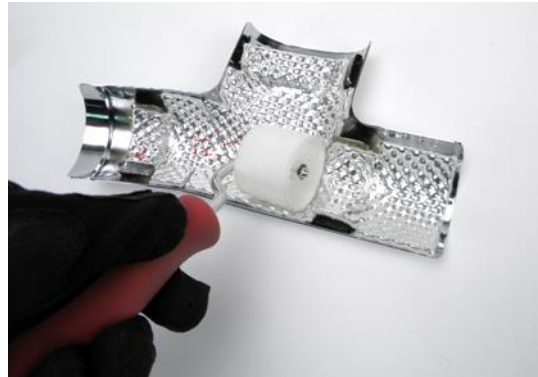


Fig. 4



Installed Liners



Fig. 5

For additional installation tips and videos visit: [deipowersports.com](http://deipowersports.com)