

PRODUCT INSTRUCTIONS

Thank you for purchasing genuine Design Engineering, Inc. products. Be sure to always wear the proper safety equipment when installing any DEI product. Design Engineering, Inc. WILL NOT BE HELD LIABLE FOR IMPROPER INSTALLATION OR USE OF THIS PRODUCT. Please follow all instructions provided. If you are unsure of any installation procedure, please contact a certified Powersports technician.

DESCRIPTION: Heat Shield for Polaris® Slingshot™

OVERVIEW: Pre-formed heat shield to reduce rider discomfort.

PART NUMBER(s): 902472

APPLICATION(s): Polaris® Slingshot™ 2015-16 SL LE

KIT CONTENTS:

Main Heat Shield (A)	QTY 1
Hardware Bag	QTY 1
Product Instructions	QTY 1

TOOLS NEEDED: Spring puller, basic hand tools, work gloves, safety glasses.

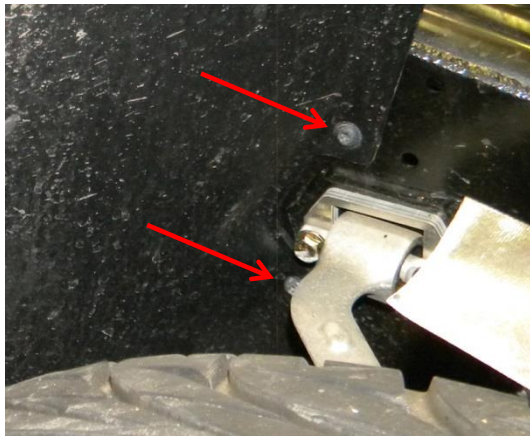


Figure 1



Figure 2

1. **⚠ CAUTION:** Make sure the engine and exhaust are cool before attempting installation.
2. You will need access to the bottom of the vehicle to complete installation. Refer to Polaris owner's manual for correct lifting procedure.
3. Remove right side Torx screws that are holding the right side rocker panel just above and below the A-arm. **(Fig. 1)**
4. Remove top Torx bolt that connects the rocker panel to the main chassis. **(Fig. 2)**
5. Using a spring puller, remove the muffler spring closest to the firewall. **(Fig 3)**
6. **⚠ CAUTION:** The edges of the shield can be sharp. Wear work gloves when handling the shield. Insert the shield along the right side of the muffler. Bend and fold the shield around muffler and slide into position on the firewall. It will take some pressure to manipulate the shield, but the shield will bend back straight once in position. The loose rocker panel allows



Figure 3



Figure 4

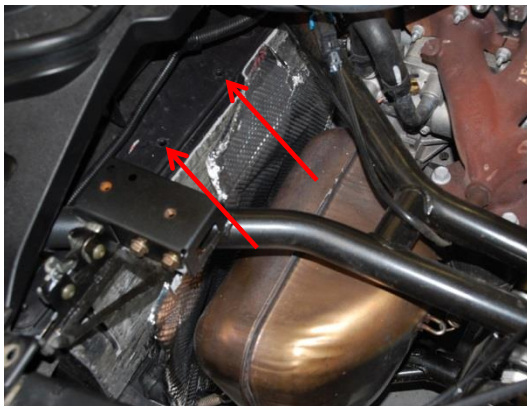


Figure 5

extra room to help make the bend around the muffler possible. **(Fig 4)**

7. Remove plastic rivets along top of firewall **(Fig 5)**
8. Fold down top flap of shield and insert supplied Phillips head screws and fender washers into the top of the firewall. **(Fig 6)**
9. Attach bottom of shield to frame tube using the supplied hose clamps and tighten. **(Fig 7)**
10. Align the shield to the fire wall. Reach under dashboard and tighten the top Phillips screws using supplied locknuts and washers.
11. Reinstall muffler spring and Torx screws.
12. Please refer to separate instruction sheet for the transmission tunnel and passenger side. Additional installation pictures can be found at www.deipowersports.com

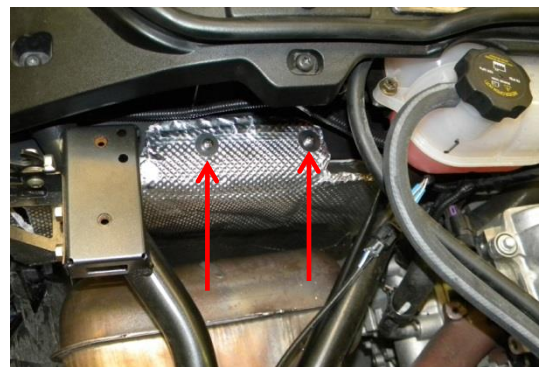


Figure 6



Figure 7