

INSTALLATION INSTRUCTIONS

Thank you for purchasing genuine Design Engineering, Inc. products. Be sure to always wear the proper safety equipment when installing any DEI product. Design Engineering Inc. WILL NOT BE HELD LIABLE FOR IMPROPER INSTALLATION OR USE OF THIS PRODUCT. Please follow all instructions provided. If you are unsure of any installation procedure, please contact a certified technician.

DESCRIPTION: Form-A-Barrier Moldable Heat Shield

KIT CONTENTS:

11002 - 12" x 12" Form-A-Barrier
11013 - 12" x 24" Form-A-Barrier
• Instructions

TOOLS NEEDED:

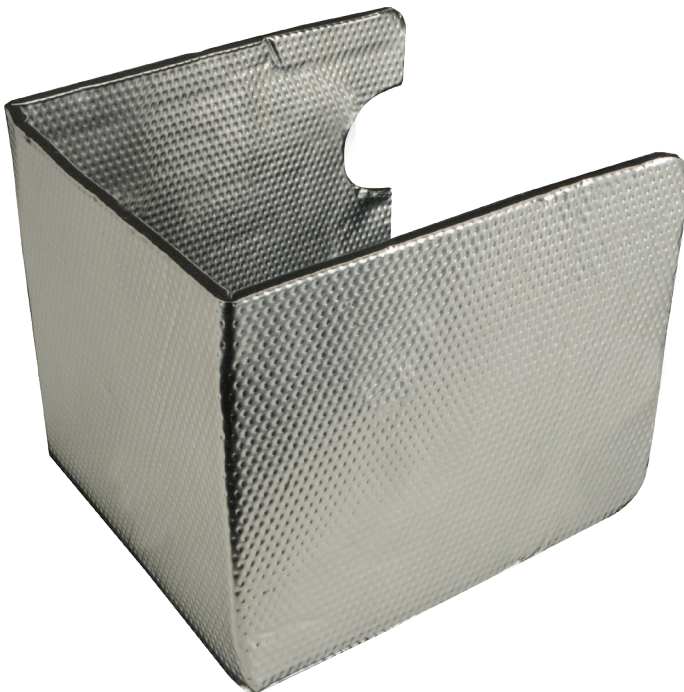
Heavy duty scissors or shears

SAFETY:

Safety glasses
Gloves

NOTE OF CAUTION: Wear eye and hand protection when installing all materials. Use spray adhesive in a well ventilated area.

OVERVIEW: Form-A-Barrier can be cut and bent into many shapes. We recommend a minimum gap of 1 inch to the heat source for best performance.



1. Use good quality scissors or shears to cut Form-A-Barrier. You can also use a sharp utility knife
2. Form-A-Barrier can be bent and shaped by hand or in a metal break. You can also drill holes using standard metal drill bits
3. To fasten Form-A-Barrier use mechanical fasteners like screws or bolts. DEI stainless locking ties or safety wire can also be used.